

MD SERIES VALVE

# ROUND OF APPLAUSE

---

## Need more information?

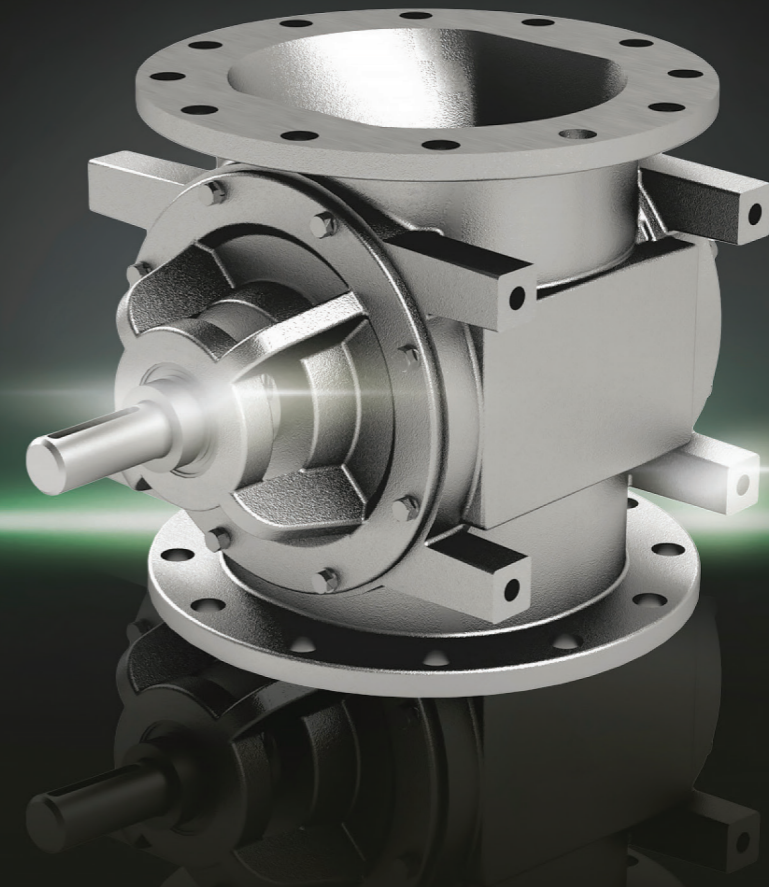
---

There is an endless combination of options available for our MD Series Valves. As such, it was impossible for us to fit all of them into this brochure. If you're interested in more information on our built-to-order valves, check them out at the link below.

[acsvalves.com](https://acsvalves.com)

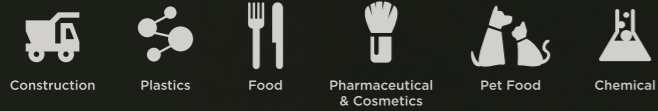
**ACS**  
VALVES

**ACS**  
VALVES



## INDUSTRIES

Every industry has its own manufacturing priorities, challenges and regulations. We continue to design new add-on features to accommodate these specific manufacturing environments and industry regulations.



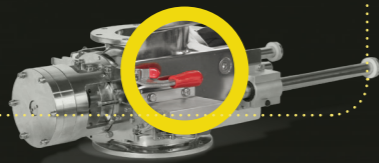
## MD SERIES VALVE

# NO MORE FITTING SQUARES INTO CIRCLES

The MD series valve features a universal ANSI class 150 flanged bolt pattern that makes this valve perfect for industries requiring round flange outlets. We also offer endless combinations of options to go with it. Take a look and customize your own MD Series valve.

## COMPLIANT PARTS

**NFPA safety and OSHA compliance is not an opt-in feature. It's a must have.** That's why the MD Series valve's round edges are easier to clean with no corners and risk of product build-up. Some of our other safety features include: ACS RotorRail™ Quick-Clean feature, Outboard bearing design, U-shaped rotor pockets, 8-vanes for flame isolation, OSHA drive guard, Discharge flange guard.

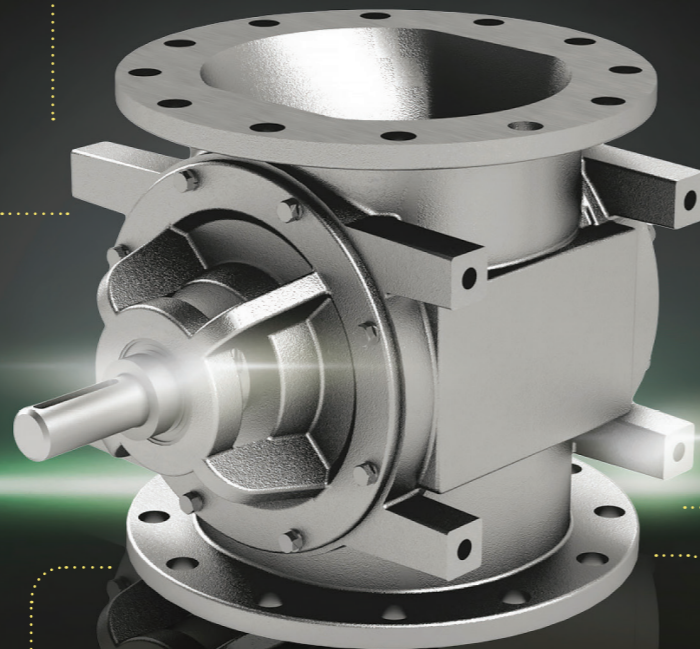


## ROTOR OPTIONS

**NUMBER OF POCKETS** Our rotors come in various sizes with beveled tips and sides to ensure maximum efficiency in any application.

8-VANE | 10-VANE | 12-VANE

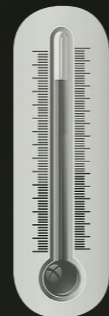
**ADJUSTABLE TIPS.** For adjustable tip rotors, there are a range of tips from polyurethane to mild steel.



## TEMPERATURE

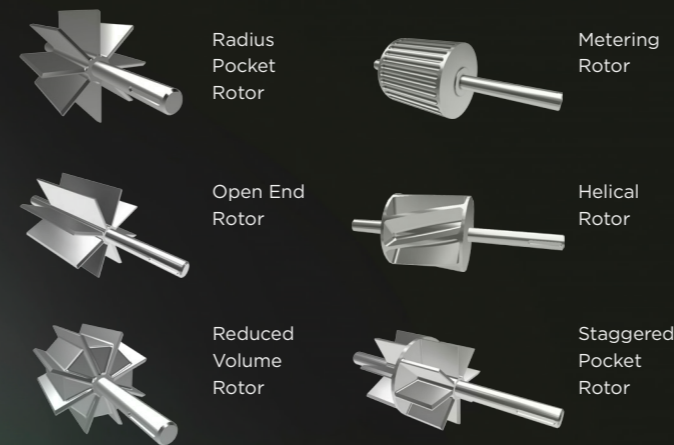
**Is it getting hot in here?** Our valves have excellent performance in high temperature applications up to 750 degrees F.

# 750°F



## ROTOR TYPES

Our suite of rotors work with the demands, challenges and regulations involved with a wide range of materials. Choose the rotor that's right for your valve.



## MATERIAL TYPES

**Valves of steel (and other materials of your choosing).** You wouldn't convey chemicals with a cast iron valve at the risk of corrosion and ruining literally everything. Here are some practical alternatives:

- stainless steel 304, 304L, 316, 316L
- 2205 stainless steel
- Cast Iron

## SIZES

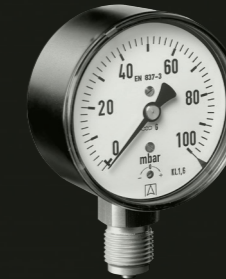
**HEIGHT:** Available in 7 heights from 7 3/8"H to 23"H  
**FLANGE:** Available in 7 round-flange sizes from 4" to 16"

## MOTOR OPTIONS

Give your application some drive with a variety of motors from Direct Drive, to Mill & Chemical, to Wash Down Duty motors.

## PRESSURE DIFFERENTIAL

**Scalability for valves that won't crack under pressure.** Up to 15 PSIG. Super-duty series up to 22 PSIG.



15 → 22  
PSIG PSIG

## ACCESSORIES

- THE MISSING PIECES.**
- Shear Pin Sprocket
  - Shear protector
  - Blow Through adapter
  - Air purge connections
  - Rotor pocket purge connections
  - Housing vent port

## INTERIOR COATINGS & POLISH

**Judging a valve by its cover, because your material deserves the best.** Our valves handle abrasive material better than HR, but they also handle lighter material with care. We have a range of coatings and polishes from hard chrome to 180 grit finishes depending on your industry.

## SEAL TYPES

**So well built, our seals might as well be in the Navy.** Choose between our ACST-4™ glandless Teflon® shaft seal or packing gland style seals.

